



Family Care Expansion & the Lakeland Long Term Care District

Presented by: Katie Mnuk, Project Coordinator
Lakeland LTC District



Family Care Expansion - History

- 1999 legislation created pilots
 - Nine counties piloted various aspects of Family Care
 - Fond du Lac County: Creative Care Options
- Evaluation Results
 - Long-term care cost savings
 - Less need for services through better health and functionality
 - Reduced reliance on institutions, more community-based care
- Statewide expansion began with legislation passed in 2006, continues today



Family Care Service Delivery System

- Transition from single-county to multi-county, regional systems
- Many governance options available
 - Create a new governmental unit
 - Execute private contracts for all aspects of service delivery
 - Quasi public-private entity



Lakeland Long Term Care District

- Will serve Fond du Lac, Manitowoc and Winnebago counties
 - Phase 1: Family Care benefit (LTC services)
 - Phase 2: Incorporate primary & acute care (Partnership benefit)

- Public, governmental body created under state law
 - Public involvement
 - Funding transparency



Benefits of District Model

- Maintains public input through district development and governance structure
- Participating counties are relieved of risk
- County dollars formerly used to supplement state and federal funds may be available for use elsewhere in the budget

Challenge:

- County no longer controls service delivery



Mission Statement

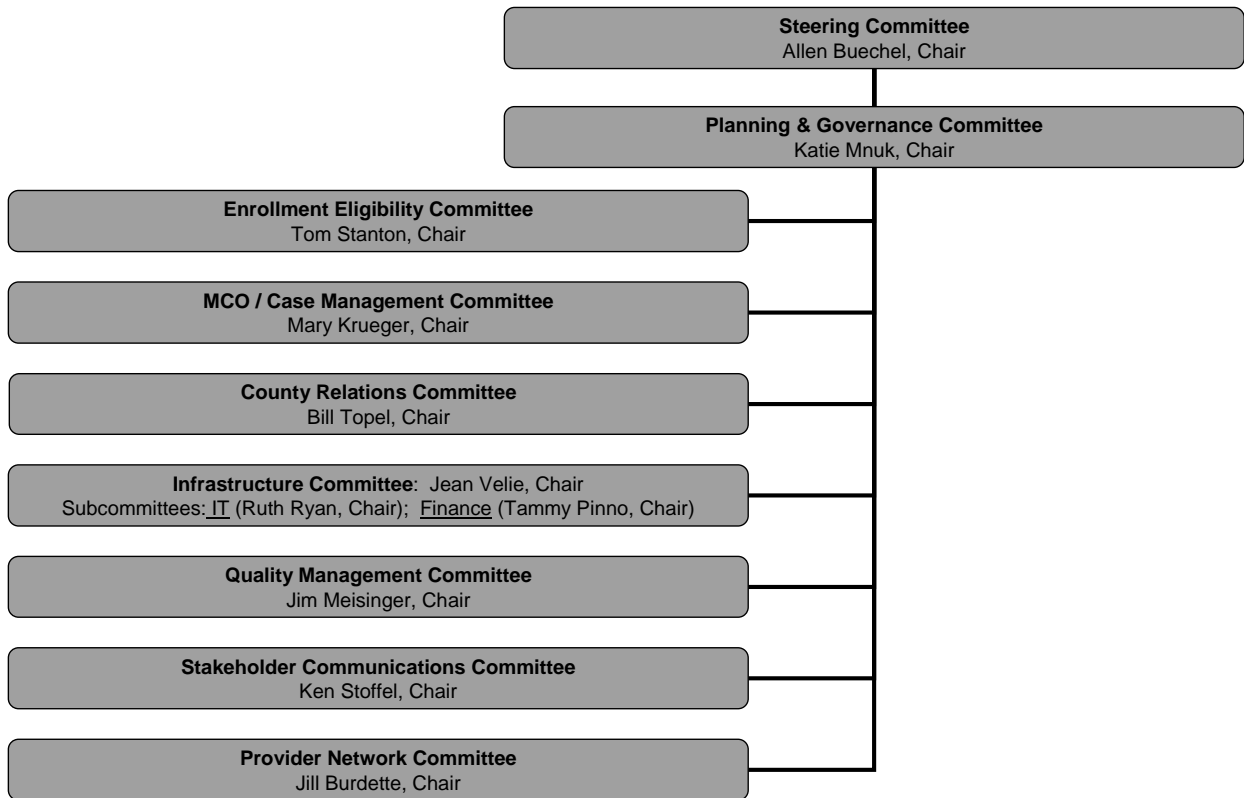
To develop a Long-term Care District that builds on the strengths, knowledge, and experience of its member counties and other regional planning groups, with a goal to provide the highest quality services to its members in an efficient, accountable, cost-effective and individualized manner.



Planning Principles

- Work as equal partners
- Develop long-term, positive working relationships
- Incorporate best practices
- Build in continuous quality improvement
- Involve all stakeholders

Planning Structure: Lakeland LTC District





Providers = Key Stakeholders

- Major program element
- Quality services
- Assist in transition, educate clients
- Help develop a better district



Key Developmental Phases:

- **Planning**
- **County Board Approval**
- **RFP Issued**
- **Certification by State**
- **Implementation**



How to Get Involved

- Website: www.lakelandtcdistrict.org
 - Current information
 - Committee contacts, agendas, minutes
 - Feedback form
- Committees
 - Provider Network
 - Infrastructure
- Provider forums
- Comment forms



Questions?

- For More Information, contact:

Katie Mnuk, Project Coordinator

(920) 929-3127

katie.mnuk@fdlco.wi.gov

www.lakelandtcdistrict.org